

Trail maps of the 707 Community Park with Coats Marsh

This is a personal map of trails in the 707 Community Park and its environs on Gabriola Island. It is a work in progress, and may be updated or changed at any time. Some of the names I have been using for several years; others I have just made-up. I'm not really sure why I'm posting this as I think that a big part of the fun of having a forest (sorry, park) like the 707CP is making your own maps. It's called exploring. My preference has been and remains, no official path naming or signage.

Navigation: Navigation is an art, not a science. It is not just latitudes and longitudes. It is being aware of one's surroundings. It's learning the lie of the land, and, without thinking, keeping track of the sun, and noticing when you cross creeks, which side you are on and which way they are flowing. Unless I'm doing some kind of research, I don't carry a GPS, and I seldom use maps. That way, I get to notice the moths with bright red wings beneath the alders, hear the cock pheasant down in the hollow that I know is northwest, hear the barred owl giving notice that it's getting dark, know the sidetrack where there's water for the dog on a hot afternoon, and can follow the deer trail to Contemplation Hill and places that some map makers consider in their anthropocentric way to be "nowhere".

What I do recommend though in winter, is that you always carry a flashlight. Darkness can come on quickly, especially if you've twisted your ankle and can only limp along. And always carry a compass. You won't need it much in summer, but at any time of year, the sun can be quickly obscured by thick, low cloud, and wind directions can change, so unless you are just keeping to the "roadways", it is, in my opinion, irresponsible to be without one. Even a simple one will do, you won't need to be measuring bearings to an accuracy of a degree. A loud whistle can come in handy too in an emergency—I've carried one ever since my dog began to go deaf.

Private Land: The park borders private land, and some of these boundaries are unmarked. Several of the major trails just cross over from the park to the adjacent land without a break, because they existed before the park boundaries were set. One could argue that private land that adjoins the park should not be mapped out of respect for the land owners. I agree; however, there is I think a problem with this, in that a map that is missing "essential" information is positively dangerous. Navigating private land may become essential in a medical emergency, wildfire emergency, or in an I'm-hopelessly-lost-and-have no-idea-where-I-am emergency. A map with blanks could easily confuse and make matters worse in these circumstances.

The principles I have used here is (a) do the minimal amount of mapping of adjacent lands; (b) only indicate trails on adjacent land that are clearly visible using Google Earth; (c) only indicate trails on adjacent land that are four-wheel tracks; (d) don't mark off-limits trails as if they were part of the park; (e) try to only mark trails on adjacent lands that lead directly to a public road; (f) don't indicate trails that are clearly within sight of a private residence or would otherwise show a lack of respect for privacy; and (g) recognize that using them is trespassing and "at one's own risk"—a concept that some lawyers have difficulty in grasping these days.

Symbols and acronyms: • (blue dot) = granodiorite erratic boulder; PB = park boundary; G = gated; NoE = no exit/entry, private land; X = physically blocked; 4 = 4-wheel track; 2 = footpath (two legs); RoW = public right-of-way; DW = private driveway; P = pull-off (roads only); | (blue dash) = creek crossing.

30 Numbers in pale bluish squares are RDN Post Numbers with “0” indicating a post without a number. They are oriented the same way as they are in the park so you can use them to give you a sense of direction. The RDN posts name the trail you are on, but, unless the post has a map, they don’t always indicate which way to go.



Yes, but? Sometimes you need a compass...or a coin.



We know where you *might* be, but we're not going to tell you.

Place names (there are notes for **707 SW** on p.31 and **Coats Marsh** on p.35)

Alder Avenue Sidetrack: An old logging sidetrack. Starts by going through one of several avenues of alder trees, but then fades away into deer tracks, though there is a woodland trail (WT-1) through to the Three Gates Trail. Interesting if you like bushwhacking the wetlands downstream of Randy Hollow. Alders must love old trails because they are open to the sky, but I wonder if compacting the soil, hence making it less permeable, is also a factor. If you are bushwhacking, look for avenues of alder; I'm told a row of them is often just one tree. See also **707 SW**.

Beacon Hill: Name remembered by Tim Brown who was born on the island and may have participated as a young man in logging in the 1930s by the Beban Logging Company. Tim remembers some stands logged as being pure Western Hemlock. The change to mixed Hemlock and Douglas-fir we see today is presumably due to the climate becoming warmer and drier. The top of the hill was known as the "look-out" and is on the ridge of high ground known as "Jimmy's Ridge".

Beacon Hill Trail: The steepest climb up Beacon Hill.

Big Puddle Sidetrack: The effective "bedrock" in the east end of the park is not sandstone but a covering of glacial lodgement till (hard-pan), about a metre down, and in some places, the surface of this has weathered to clay with the result that the drainage is not very good in winter.

Canary Grass Meadow: In the southwest corner. Seldom free of water, even though it sometimes takes an unwary foot to find it. Reed canary grass (*Phalaris arundinacea*) grows over two metres tall here. It was used by the Snunéymux^w for basket making, so this place is a good candidate for a Hul'qumi'num name.

Casa Tilly Trail: When Gabriola was visited in 1791 by a small Spanish Navy expedition, the chart that was subsequently published was annotated *Punta de Gabiola* (Law Point and close-by Flat Top Islands) and *Punta de Casa Tilly* (Orelebar or Berry Point). One name survives as "Gabriola" but the other rapidly fell into disuse. "Gaviola" was for Simón Gaviola y Zabala, and "Casa Tilly" was Francisco Javier Everado Tilly, both Spanish noblemen with naval connections. Gabriola thus came close to becoming known as Tilly or Trilly Island.

Centre Road: This is not a name I use, but perhaps should. On my maps, this is split into Road to Dick's Swamp Trail, which is an earlier name; and Red Loop Trail, which is a later name.

Coats Drive Spur: Coats Drive footpath entrance in the deep south. This was originally part of GaLTT's Yellow Loop, and the trees along it are still adorned with a superabundance of yellow paint and yellow triangles. See also **Coats Marsh addendum**.

Cock Pheasant Hollow: Somewhere in the northwest corner below the NW Scarp. Have not mapped it though as I haven't actually seen the pheasant, only heard it, and it may move!
Probably now obsolete.

Contemplation Hill: One of, if not, the most delightful lookout points in the park. A great picnic spot. There is a footpath heading west from here, in good shape (fall 2017, WT-2).

Dead Deer: Bikers' name for Green Tunnel Trail.

DG Connector: Actually DG stands for Doe-Gehlbach. DG Technical Documentation Specialists was the name Jenni and I used when we were freelance technical writing for a living. Now, I say it stands for Douglas-fir and Grand-fir. **Probably now obsolete.**

Dog Drink Sidetrack: The last place in high summer to easily find water for the dog. An old wide logging trail that stops abruptly and fans out into several not-much-more-than deer tracks. If you keep heading south, you reach the east end of Canary Grass Meadow and can easily bushwhack southwest from there to the Three Gates Trail or east to the Mainline Trail.

Down-to-the-Marsh-Meadow Bushwhack: Starts off fine from the east end but goes into open ground and you are on your own. Usually ends in the southwest corner close to the Canary Grass Meadow (or in winter, Wetland).

East Loop Trail: A major trail. Originally part of GaLTT's Yellow Loop (see Red Loop Trail). The open field just outside the park to the south has an interesting collection of ice-age erratic boulders, many of which are grouped around Fawn Place Pond at the north end of Fawn Place. Wet in winter; see Big Puddle Sidetrack.

East Passport Trail: See Passport Trail.

El Stub Trail: Three reasons for this name. It has several short stubs into the bush; it cuts off the short stub of the "L"; and it's Spanish (sort of). **Probably now obsolete.**

False Loop Trail: Easily confused with the Red Loop Trail which runs parallel to it. The False Loop Trail however peters out and when it does you have to head uphill and south through the bush (not difficult) to gain the Red Loop Trail, which can't be missed.

Fawn Place Spur: GaLTT + RDN public trail into the 707CP.

Fir Trail: So-called, mainly because I had run out of ideas, but also with the thought in mind that a tourist might be lured into thinking this had something to do with the Hudson's Bay Company fur trade. **Probably now obsolete.**

Fisher Road Spur: Fisher Road entrance. Gated for vehicles. See also **Coats Marsh addendum**.

Fresh Air View: Advertised as a viewpoint, but the horizon is perilously close to the tops of trees. It is open and refreshing, but unless you have long legs and ...oh, never mind.

Green Tunnel Trail: Sort of half way between a sidetrack and a trail. In places, it has some offshoots, zig-zags round fallen trees, and varies between a 4-wheel driveway and single file, but it is well worn and not difficult to follow. Wonderfully quiet compared to the other tunnel.

Jeanette Avenue Spur: Jeanette Avenue footpath entrance.

Jimmy's Ridge: See Beacon Hill.

Just-Keep-Heading-South Bushwhack: See False Loop Trail.

KR Split: In the El Stub Trail. The east side of the bifurcation is more open than the west side, which is under alders, but otherwise they are similar and they start and end at the same places. For years, I always took the right-hand fork (KR = Keep Right) no matter which direction I was going and consequently for years only half-realized that this split existed.

Look-out: Old name for the top of Beacon Hill.

Loops: *Loops were removed in the Sept. 13, 2012 revision. The names were cluttering up the maps, and probably seldom used, if at all.*

Magic Downhill: Unexplored bikers' trail (49° 10.005'N, 123° 49.316'W). 27

Mainline Trail (formerly North-South Main Trail): Connects the North Triangle to the southern part of the park at the junction of the Fisher Road Spur, Marsh Trail, and the Coats Drive Spur.

“Mainline” is a railway term, which, as a former train-spotter, appeals to me. The principle road in a logging operation is also known as the “main”. A “mainline” is also a long heavy cable used to winch logs out of the bush to a landing. See also **Coats Marsh addendum**.

Marsh Trail: Leads to the boundary of the park. ~~Crosses private land~~ from one part of the park to another. The Marsh is Coats Marsh, though, if you like, it could be the Canary Grass Meadow, which is a wetland. See also **Coats Marsh addendum**.

Mary Road Spur: Short footpath entrance.

McCollum Road Spur: Continuation of the road. Note that the old route through to Fisher Road is over private property, please be careful to observe the new turn off to and from the park.

Needs-a-Haircut Bushwhack: An overgrown trail connecting with a bit of bushwhacking across open ground to the Dog Drink Sidetrack and then into an avenue of alders.

North Glade: See South Glade.

North Glade Fork: See North Road North Spur.

North Road Entrance: Junction of North Road and the North Road North Spur. Some people call this the “Stumps Entrance” on account of all the large stumps put there to block 4-wheel access. My own name is the One Only Entrance on account of the two notices marking the entrance. These are “No Trespassing” on one side of the trail, and “No Smoking” on the other side. I can only assume that one is free to ignore at least one of these notices, but not both.

North Road North Spur: A short spur that, from North Road, forks into trails going to North Glade or South Glade.

North Road South Spur: Footpath that joins what may be a private driveway leading to North Road, although a fair distance from the gate of the house.

North-South Main Trail: See Mainline Trail.

North Triangle: Connects the Road to Dick's Swamp Trail to the west, the Ricki Avenue Spur to the north, and the North-South Main Trail to the east and south.

Northwest Scarp: I'm tempted to call this Cock Pheasant Hollow because when there is one there it's call can be heard all over the northwest side of the park.

One Only Entrance: See North Road Entrance.

Passport Trail: Actually a short form of Not-Without-A-Passport Trail. There are two of them, east and west, actually three if you include the Three Gates Trail. They head south across the border, which always reminds me of the US border crossings. See also **707 SW**.

Pleistocene Trail: So called because of the remarkable collection of erratic boulders along its length. The Pleistocene was the geological era known as the “ice ages”. These boulders are quartz-diorite, granodiorite, or a fine-grained version of granodiorite called dacite and are from

the Coast Mountains and were brought here around 14-thousand years ago when the ice was so thick it was moving directly from the Coast Mountains across the strait and over the Vancouver Island Mountains to the sea, ignoring the Strait of Georgia alignment. The location of some of the erratics is marked on the map with ice-blue circles. I've counted about sixty of these in or around the park.

Randy Hollow: After Randy Young, a tireless “let’s get it done” volunteer who once unsuccessfully (so far) proposed that this wetland be converted to a reservoir. The trail is culverted but in such a way that the wetland doesn’t completely drain and continues to provide habitat for ducks in winter. The underlying soil contains a metre-thick layer of ice-age clay which keeps the watertable high.

Red Loop Trail: In recognition of the work done by GaLLT volunteers who first put up signage in the park. There was a Red Loop and a smaller Yellow Loop, marked by simple wooden signs and discrete paint marks on trees, some of which still exist. It is the eastern continuation of the original Road to Dick’s Swamp. See Centre Road.

Ricki Avenue Spur: Ricki Avenue entrance. Gated. “Ricki Road” is a local name.

Road to Dick’s Swamp Trail: “Road to Dick’s Swamp” is an early name appearing on an 1875 survey map of Gabriola discovered in Victoria archives by Kathy Dunster who was a consultant during the park management plan development. Dick was John Dick, one of the sons of pre-emptor James Dick, and Dick’s Swamp is where the Somerset Farm owned by the Boulton family. The swamp area became famous in the sixties for its potent mushrooms <http://www.nickdoe.ca/pdfs/Webp40.pdf>. The swamp is fed by a spring in the Somerset Pit and had a brief moment of notoriety in 1872 when islanders, split between whether to locate the island’s first school at the south end or north end, unanimously voted to locate it near Dick’s Swamp, both sides knowing that this choice was completely unacceptable to the opposition. See also Centre Road.

Shady Sidetrack: So called for two reasons. One, because it is an old 4-wheel logging track now easiest to follow by following the avenue of alders, which provide lots of shade; and two, because it is deceptively marked on the RDN map as a simple loop. Although the start is easy enough to find at the east end (look for the alder avenue), it eventually peters out, and the west end of the loop is a trail I would only recommend to logging archaeologists (slash piles and hand-cut stumps) and owners of dogs who actually can tell one deer trail from another.

South Glade: Some glades are natural and are the result of sandstone bedrock being too unfractured to allow trees to take root. Others are just assembly points used by loggers. The South Glade superficially resembles the near-by North Glade, and it’s important when navigating in the park to know the difference.

South Glade Fork: See North Road North Spur.

Structure: This is one of the dozens of granodiorite erratic boulders in the park. This one is not particularly big, and there are others just as easily seen without bushwhacking, but it was flagged during the planning process as being a “rock structure”. It is on the Pleistocene Trail. It is unfortunately habitually adorned with graffiti in the form of a random pile of stones. Some people just can’t resist pee-ing on everything.

Granodiorite is, by the way, not granite. Granite commonly contains pink or orange potassium feldspars in addition to the white sodium-calcium feldspars in granodiorite. Granite is rare in the

Coast Mountains and also, but less so, on near-by Vancouver Island, and I'm not aware of any sizeable granite erratic anywhere on Gabriola.

Stumps Entrance: See North Road Entrance.

Summit Trail: Bikers' name for WT-2.

Three Gates Trail: ~~Only for information and emergency use as it crosses private land.~~ So-called because there is a gate near the north end where it leaves the 707 CP, another further south where it enters Coats Marsh RP, and a third where it leaves Coats Marsh RP. See **707 SW** and **Coats Marsh addendum**.

Tin Can Alley Spur: Footpath to North Road opposite Tin Can Alley. This trail is thanks to Randy Young who researched it and organized its construction.

Tin Can Alley: Bikers' name for the Tin Can Alley Spur.

Toe Nail Trail: One trail in from the end of the "L". **Probably now obsolete.**

Toopy Trail: Originally the "Two Piles Trail" so-called because of the two large slash piles at the entrance of the trail left over from the 1997-8 logging. Most such slash piles were burnt, but these survive. The name was held up to ridicule in a public forum as possibly being an indicator of a medical problem. This unkind remark prompted the change to "Two P" and hence "Toopy" to retain its original name for sensitive souls in the know. **Probably now obsolete and the trail should become part of the well-worn Beacon Hill Trail.**

Trident Junction: This is one of those trail junctions that looks uncomplicated on a map, but when you encounter it in real life, it can be disconcerting. It offers the traveller three different ways to go. In the process of exploring the three choices and sorting out which goes where, I became quite familiar and fond of Trident Junction. There is a small but visible-from-the junction erratic on the Tin Can Alley Spur.

Two Glades Connector Trail: Connects North Glade and South Glade.

Viewpoint Trail: Short spur from Red Loop Trail up to Contemplation Hill. Pre-dates bikers' trails.

West End: Enters private land, but in an emergency, a quick four-wheel entry and exit to South Road near Crestwood Road.

West Passport Trail: See Passport Trail.

Western Front: Bikers' name for WT-6.

Wilkinson Way: [Wilkinson Way is not within the 707CP boundaries, but public access is allowed under an agreement between the landowner and GaLTT. Please try not to stray off this path.]

Named for Merv Wilkinson who for many years practised and promoted sustainable selective forestry in the Wildwood Forest near Ladysmith.

Witch Doctor Bikers' name for WT-5.

Woodland trails (WT): Woodland trails are single-file footpaths and biker trails that do not follow old logging roads. They are well-enough worn by foot and tire traffic and clipped to be distinguished from deer trails, but should be used cautiously (compass recommended) if not familiar with their route. They seldom if ever end abruptly, so if you find you've lost the trail you should backtrack a short distance and look for a turn that you missed. Bikers have in some

places used logs to bridge rills and rutted sloughs. The trails are most easily obscured by salal and can't be followed when there's fresh snow on the ground. Keep in mind also that deer trails sometimes become runoff courses in winter, which when dried out gives them the appearance of being more well-used than they are. The numbering system (WT-1, WT-2, etc.) is arbitrary. Not all trails of this kind have a WT designation, particularly ones like the Green Tunnel Trail (*Dead Deer*) that have existed for some time.

WT: See Woodland trails.

WT-1: Alder Avenue. Used to be a sidetrack. See Map Q3.

WT-2: *Summit Trail*. From Contemplation Hill west to the Mainline Trail. Access to WT-7.

WT-3: *no name*. From Mainline Trail (Post 31) N33°E to junction with WT-4.

WT-4E: *no name* ("the scarp trail"). From north end of WT-3 east to the Casa Tilly Trail (Post 22).

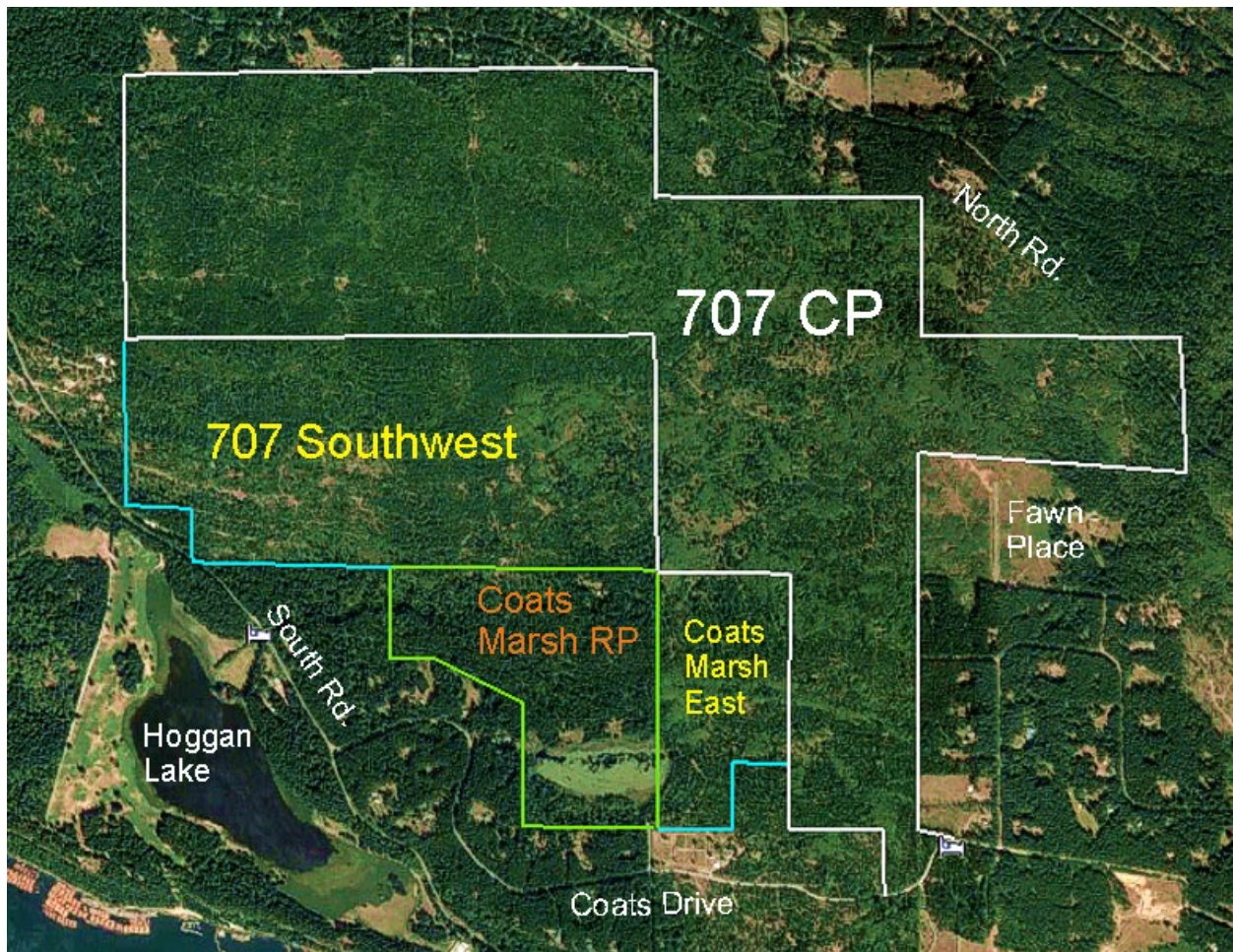
WT-4W: *no name*. From north end of WT-3 west to the Ricki Avenue Spur (just north of Post 14).

WT-5: *Witch Doctor*. Bike trail from the Mainline Trail east to the South Glade (between the East Loop Trail to the south and the Red Loop Trail to the north). Fairly easy to follow and discretely sign-posted

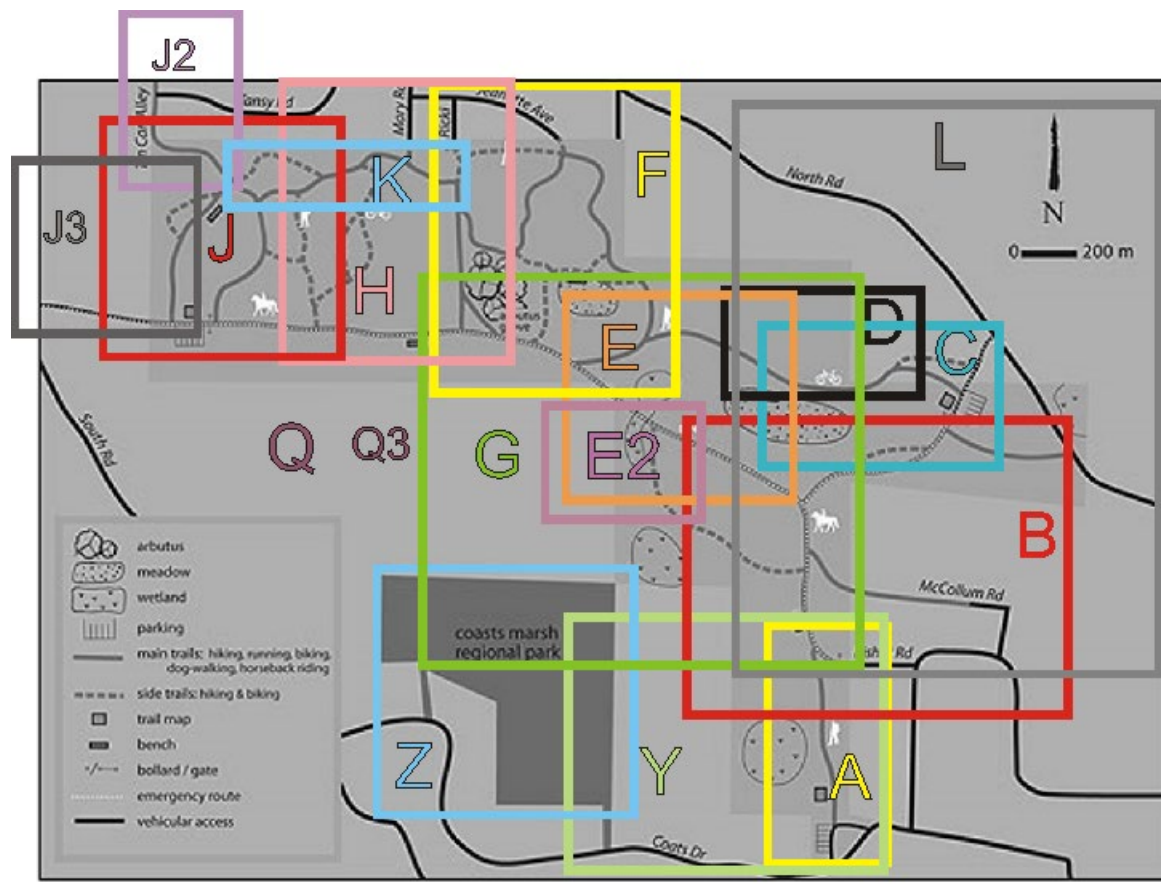
WT-6: *Western Front*. Bike trail from the Mainline Trail west, crosses Dog Drink Sidetrack joins up to Alder Avenue (WT-1) which continues westward to the Three Gates Trail. Not a very worn trail and not signed, but fairly easy to follow even if you sometimes need to see tire tracks for re-assurance.

WT-7: *no name*. From western end of WT-2 steeply down to WT-5. Foxglove Down is open country and there is no need to follow the bikers' trail between Contemplation Hill and WT-5.

◇

September 2017 addendum

Maps A-L	707 CP	existing 707 Community Park
Maps Q-Q3	707 Southwest	potential addition to and integration with the 707 CP
Map Y	Coats Marsh East	potential addition to and integration with the Coats Marsh RP
Map Z	Coats Marsh RP	existing Coats Marsh Regional Park



RDN Post Number index (This may now be out-of-date)

In the tables, “orient” indicates roughly ($\pm 22.5^\circ$) which way you are facing when standing in front of the post with the top sloping down towards you.

Post	1	2	3	4	5	6	7	8	9
Maps	J2	J2	J, J2, J3	J, J3	J, J3	J, J3	J, J3	J, J3	J
Orient	S	W	S	E	S	S	W	E	N
Post	10	11	12	13	14	15	16	17	18
Maps	H, J	H	H, J	F, H	F, H	F, H	F, H	F, H	F, H
Orient	N	NW	S	S	W	W	W	E	SE
Post	19	20	21	22	23	24	25	26	27
Maps	F	F	F	F, F2	E, F, G	C, D	C	C	B, G
Orient	SW	NE	NE	S	S	S	SW	SE	SW
Post	28	29	30	31	32	33			
Maps	A, B, G	A	A	E, F, G	F, G	F			
Orient	W	SW	N	SW	S	S			

Old Post Numbers (brown) and new Locations Numbers (orange)

Post	1	2	3	4	5	6	7	8	9
Location	1	2	3	34	35	36	30	5	6
Post	10	11	12	13	14	15	16	17	18
Location	7	9	37	40	39	24	15	14	12
Post	19	20	21	22	23	24	25	26	27
Location	17	20	21	22	48	50	52	54	58
Post	28	29	30	31	32	33			
Location	84	85	79	45	44	42			

Entry/Exit	Nearest Location		lat. deg	lat. min	long. deg	long. min
EE1	1	North Rd. (Tin Can)	49	10.543	123	49.930
EE2	2	Tansy Dr.	49	10.357	123	49.943
EE3	11 *	Mary Rd.	49	10.241	123	49.223
EE4	12	Ricki Ave.	49	10.222	123	49.096
EE5	16	Jeanette Ave.	49	10.233	123	48.831
EE6	33 *	South Rd. (Wilkinson)	49	9.966	123	50.272
EE7	34 *	South Rd. (emerg.)	49	9.939	123	50.254
EE8	52	North Rd. (stumps)	49	9.904	123	47.541
EE9	57	Fawn Pl.	49	9.569	123	47.751
EE10	65	South Rd. (Golf)	49	9.442	123	49.759
EE11	71	Coats Drive (west)	49	9.185	123	49.136
EE12	78	Stanley Pl.	49	9.009	123	48.607
EE13	79	Coats Drive (central)	49	8.921	123	47.950
EE14	80	Coats Drive (east)	49	8.985	123	47.866
EE15	85	Fisher Rd.	49	9.276	123	47.963
EE16	86	McCollum Rd.	49	9.408	123	47.773
EE17	89	North Rd. (east)	49	9.625	123	47.264

Waypoints

WP1	62**	W end S.Blvd.	49	9.580	123	49.856
-----	------	---------------	----	-------	-----	--------

* All nearest locations are at the Entry/Exit roadside waypoints except:

#11 is 46 m south of EE3

#33 is 462 m northeast of EE6

#34 is 401 m east of EE7.

Waypoints are my own unposted locations.

** #62 is 391 m east of WP1.

location #	lat deg	lat min	long deg	long min	UTM	
					10U	northing easting
1	49	10.543	123	49.930		5447323 439348
2	49	10.357	123	49.943		5446979 439328
3	49	10.161	123	49.719		5446612 439597
4	49	10.160	123	49.658		5446610 439671
5	49	10.116	123	49.615		5446528 439722
6	49	10.138	123	49.596		5446568 439745
7	49	10.145	123	49.516		5446580 439843
8	49	10.175	123	49.458		5446635 439914
9	49	10.187	123	49.345		5446656 440051
10	49	10.209	123	49.331		5446696 440069
11	49	10.221	123	49.220		5446717 440204
12	49	10.222	123	49.096		5446717 440355
13	49	10.187	123	49.056		5446652 440402
14	49	10.167	123	49.057		5446615 440401
15	49	10.158	123	49.059		5446598 440398
16	49	10.233	123	48.831		5446734 440677
17	49	10.140	123	48.894		5446563 440598
18	49	10.098	123	48.868		5446485 440629
19	49	10.018	123	48.620		5446333 440929
20	49	9.990	123	48.681		5446282 440854
21	49	9.998	123	48.694		5446297 440839
22	49	9.995	123	48.817		5446293 440689
23	49	10.039	123	48.913		5446376 440573
24	49	10.117	123	49.074		5446522 440379
25	49	10.110	123	49.077		5446510 440375
26	49	10.003	123	49.230		5446313 440187
27	49	9.997	123	49.322		5446303 440076
28	49	9.940	123	49.472		5446200 439892
29	49	10.017	123	49.496		5446343 439865
30	49	10.033	123	49.597		5446374 439742
31	49	10.058	123	49.849		5446423 439436
32	49	10.084	123	49.837		5446471 439452
33	49	10.080	123	49.934		5446465 439334
34	49	9.901	123	49.929		5446134 439336
35	49	9.900	123	49.879		5446131 439397
36	49	9.901	123	49.737		5446131 439569
37	49	9.896	123	49.467		5446118 439897
38	49	9.899	123	49.392		5446123 439988
39	49	9.945	123	49.051		5446203 440404

40	49	9.896	123	49.055	5446113	440398
41	49	9.889	123	49.001	5446099	440463
42	49	9.875	123	48.918	5446076	440565
43	49	9.948	123	48.830	5446206	440672
44	49	9.865	123	48.830	5446052	440671
45	49	9.831	123	48.738	5445988	440782
46	49	9.830	123	48.727	5445986	440795
47	49	9.863	123	48.531	5446045	441034
48	49	9.888	123	48.535	5446091	441030
49	49	9.817	123	48.211	5445955	441422
50	49	9.843	123	47.803	5445998	441918
51	49	9.858	123	47.783	5446026	441943
52	49	9.904	123	47.541	5446108	442238
53	49	9.830	123	47.572	5445971	442198
54	49	9.750	123	47.629	5445833	442136
55	49	9.727	123	47.640	5445781	442114
56	49	9.628	123	47.795	5445600	441924
57	49	9.569	123	47.751	5445490	441976
58	49	9.562	123	48.072	5445481	441586
59	49	9.664	123	48.286	5445673	441328
60	49	9.756	123	48.569	5445847	440986
61	49	9.710	123	49.461	5445773	439901
62	49	9.544	123	49.539	5445467	439803
63	49	9.535	123	49.506	5445450	439843
64	49	9.500	123	49.515	5445385	439831
65	49	9.442	123	49.759	5445281	439533
66	49	9.551	123	49.022	5445473	440431
67	49	9.580	123	48.961	5445526	440506
68	49	9.416	123	48.673	5445218	440852
69	49	9.255	123	48.975	5444924	440482
70	49	9.280	123	49.153	5444973	440266
71	49	9.185	123	49.136	5444796	440285
72	49	9.202	123	48.894	5444825	440580
73	49	9.264	123	48.574	5444935	440970
74	49	9.287	123	48.568	5444978	440978
75	49	9.156	123	48.400	5444733	441179
76	49	9.130	123	48.407	5444685	441170
77	49	9.110	123	48.509	5444649	441046
78	49	9.009	123	48.607	5444463	440925
79	49	8.921	123	47.950	5444281	441718
80	49	8.985	123	47.866	5444409	441825
81	49	8.986	123	47.950	5444412	441723
82	49	8.990	123	47.967	5444420	441702

83	49	9.152	123	48.033	5444721	441625
84	49	9.307	123	48.056	5445008	441600
85	49	9.276	123	47.963	5444950	441713
86	49	9.408	123	47.773	5445192	441946
87	49	9.418	123	47.974	5445213	441702
88	49	9.522	123	48.064	5445407	441595
89	49	9.625	123	47.264	5445588	442569

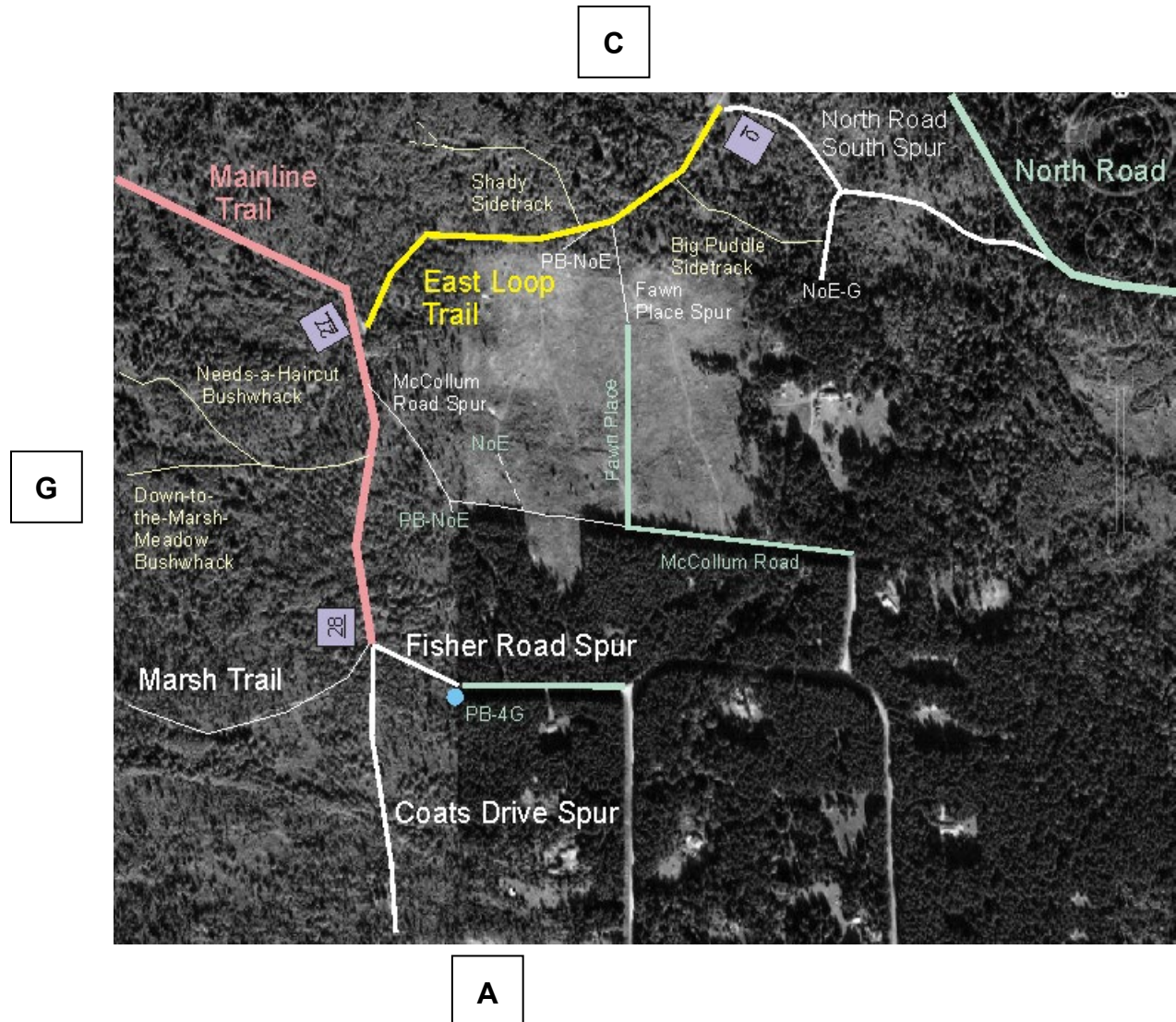
Map A

Revision: 4A



Map B

Revision: 5B



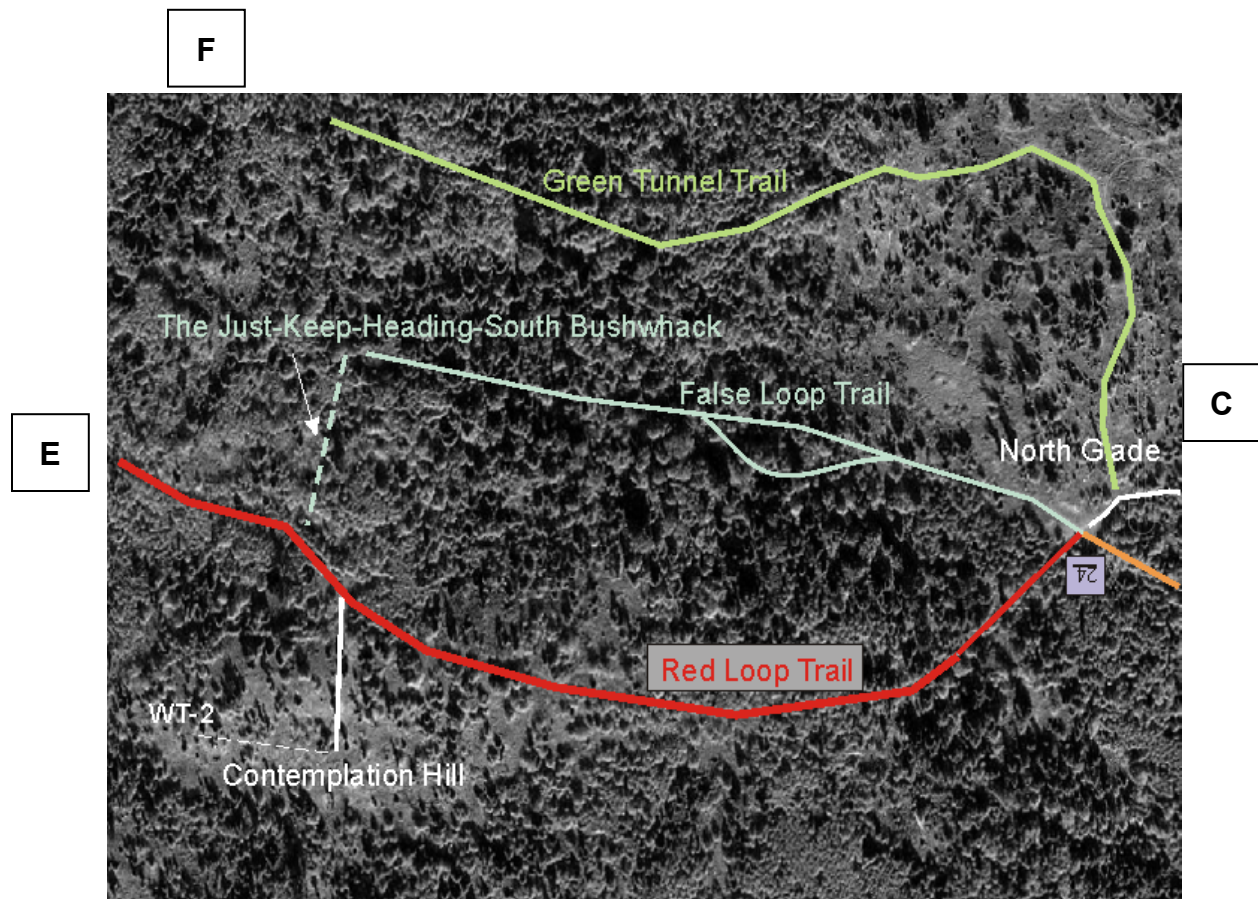
Map C

Revision: 3

F2**D****B**

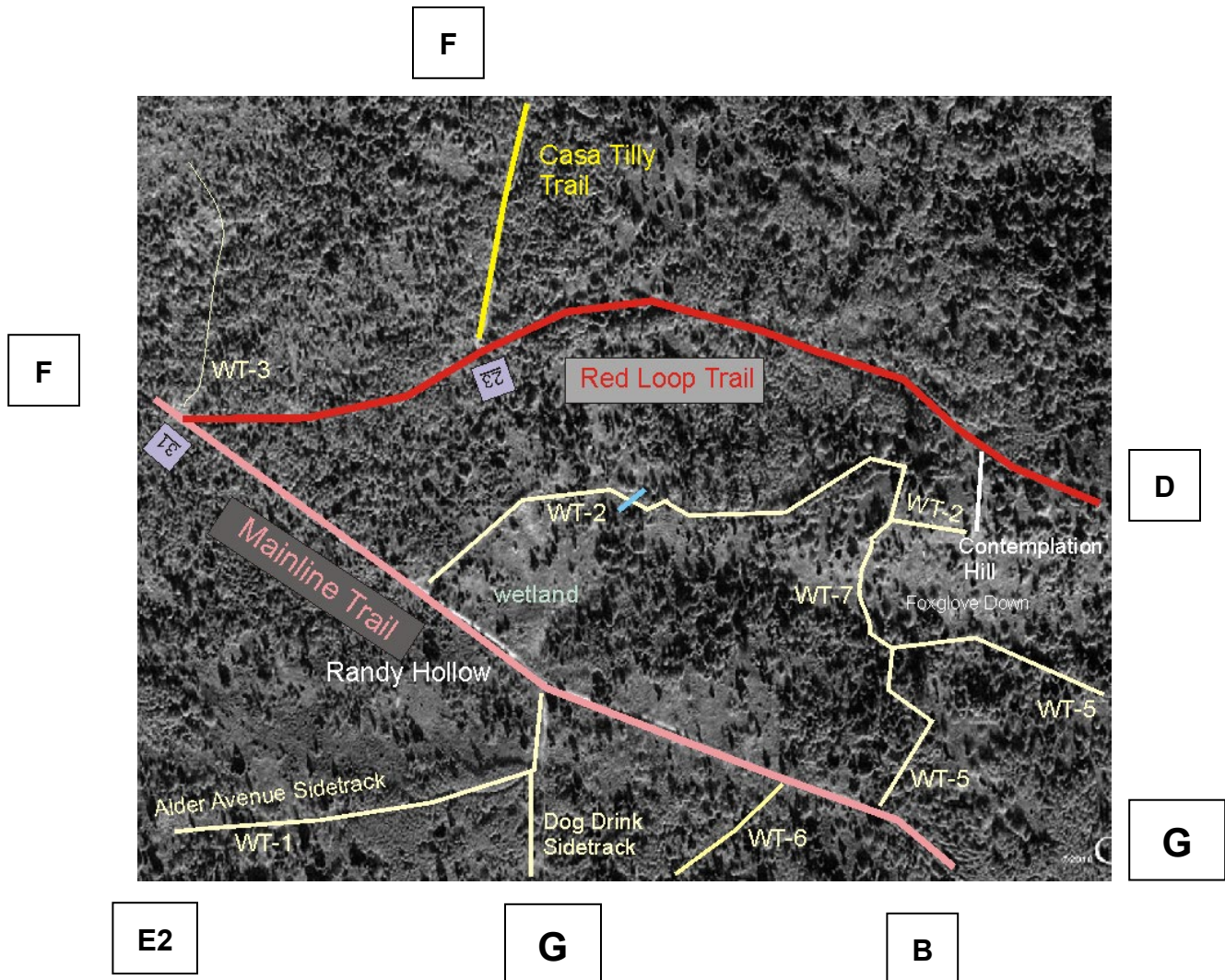
Map D

Revision: 2A



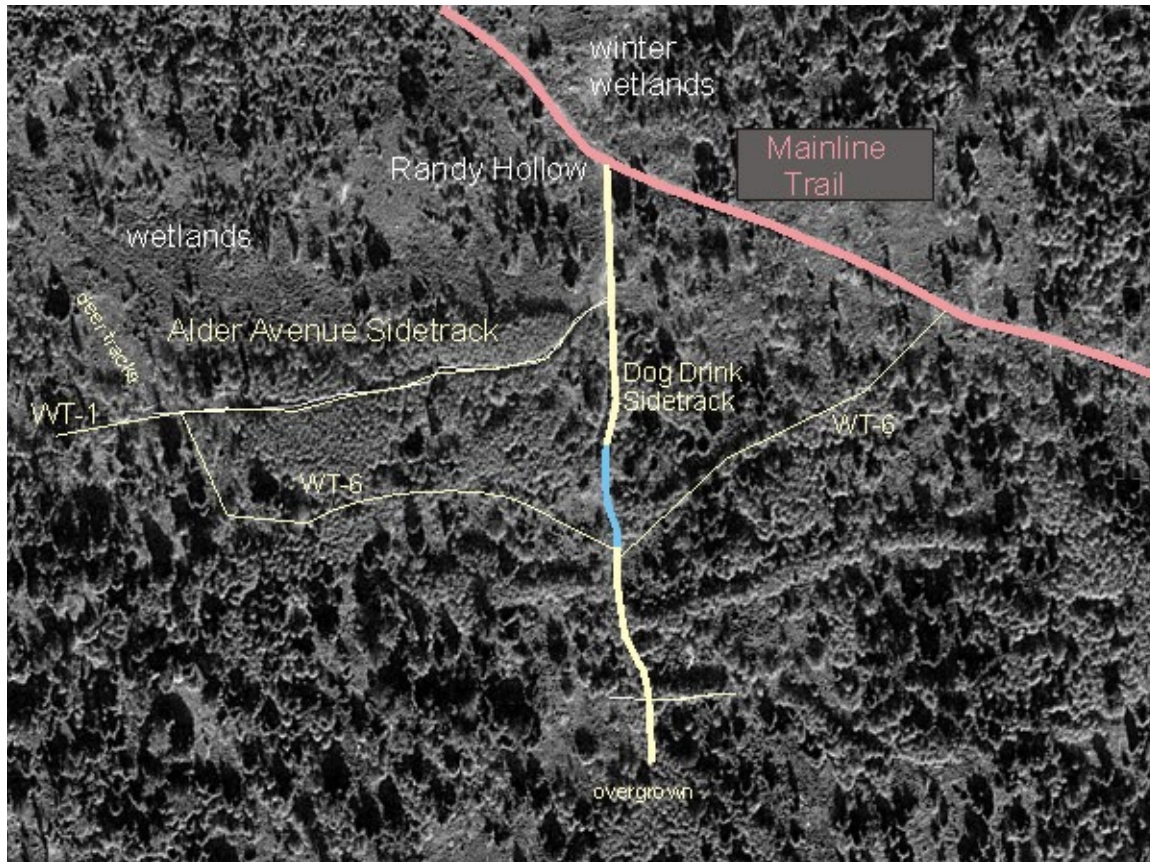
Map E

Revision: 5



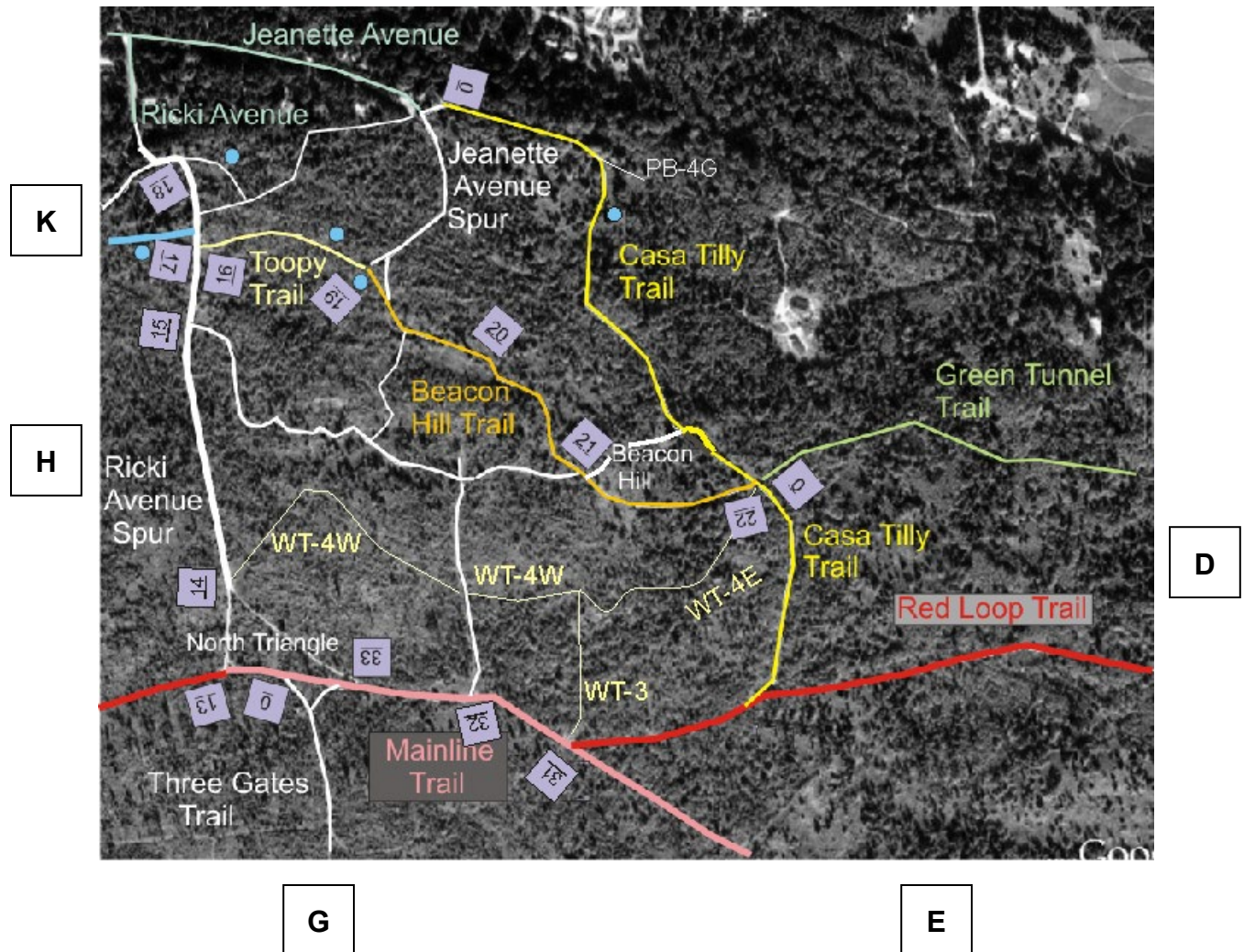
Map E2

Revision: 2A

G**B****G**

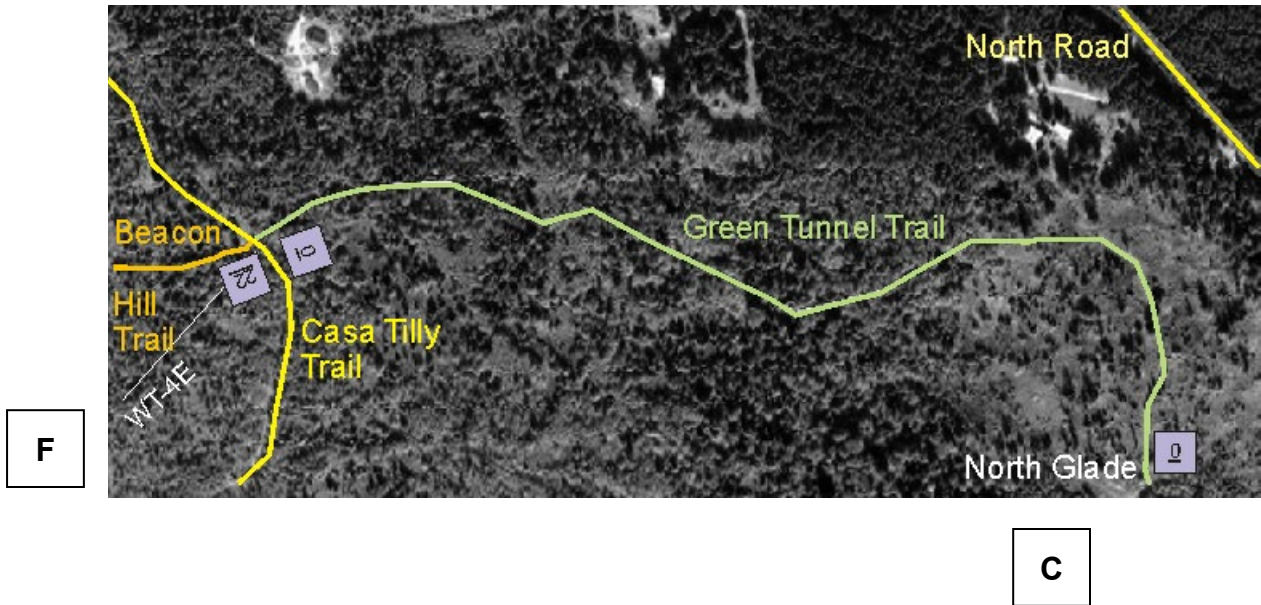
Map F

Revision: 4A



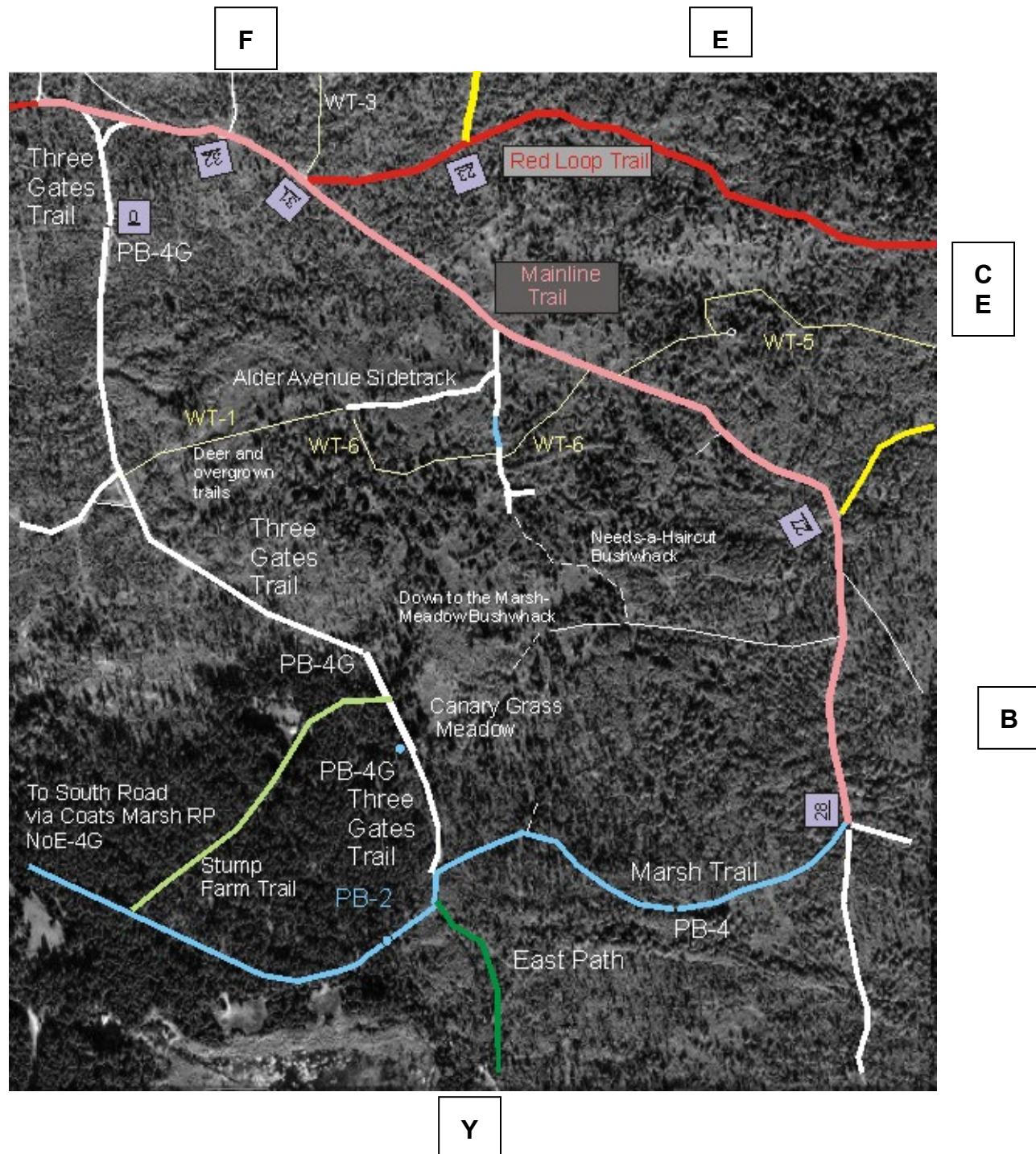
Map F2

Revision: 2



Map G

Revision: 5

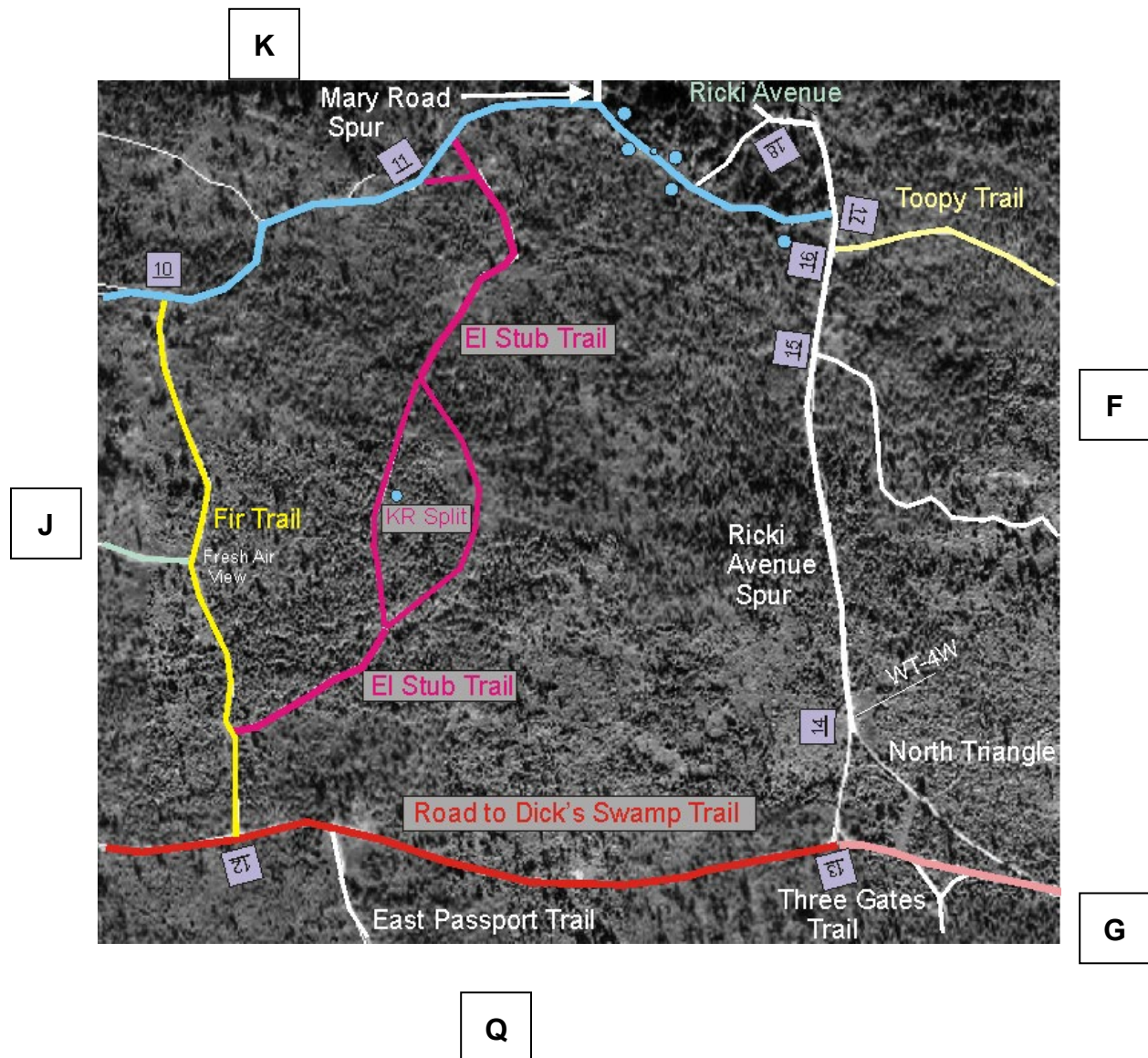


Map G2: Map G logging roads - image from 2005.



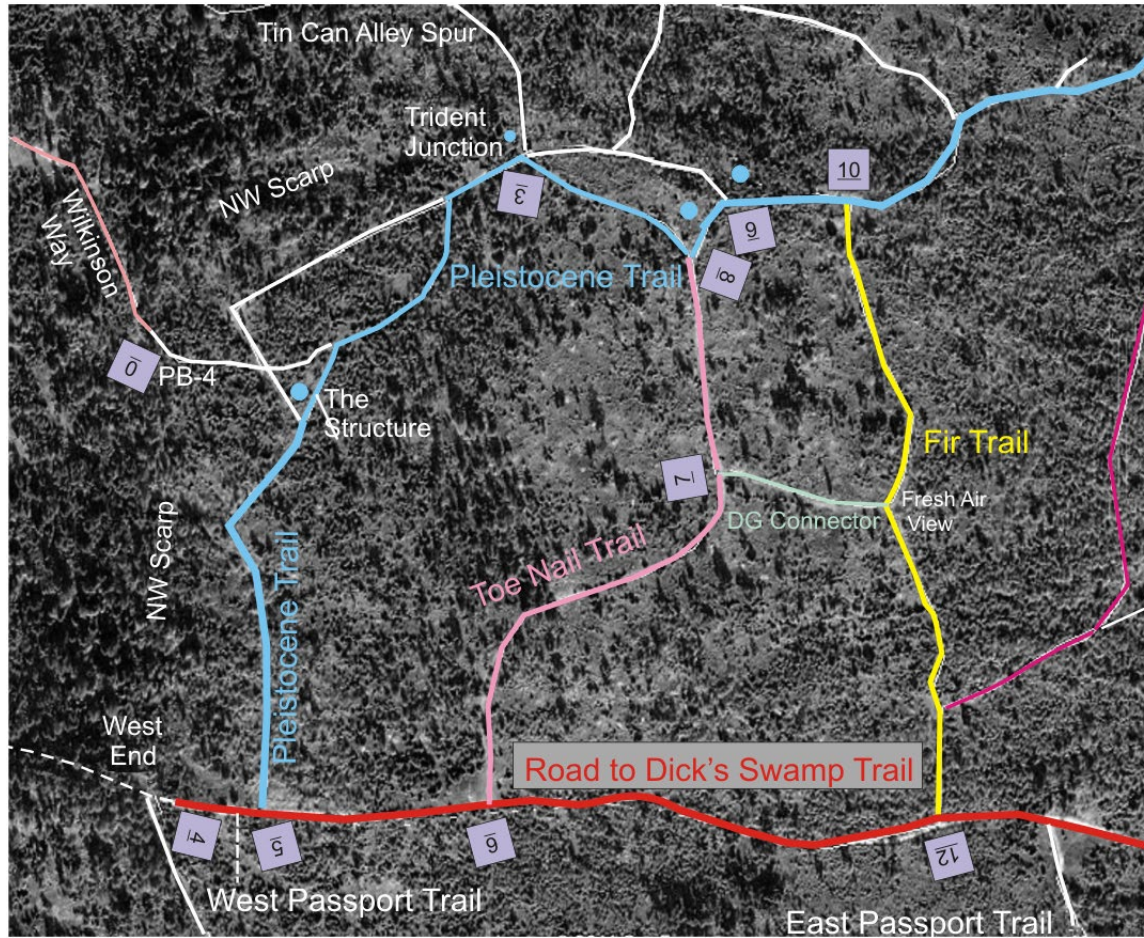
Map H

Revision: 3B



Map J

Revision: 3

J2**K****J3****H**

Wilkinson Way is a GaLTT-licensed trail through private land. Please try not to stray from this trail.

Map J2

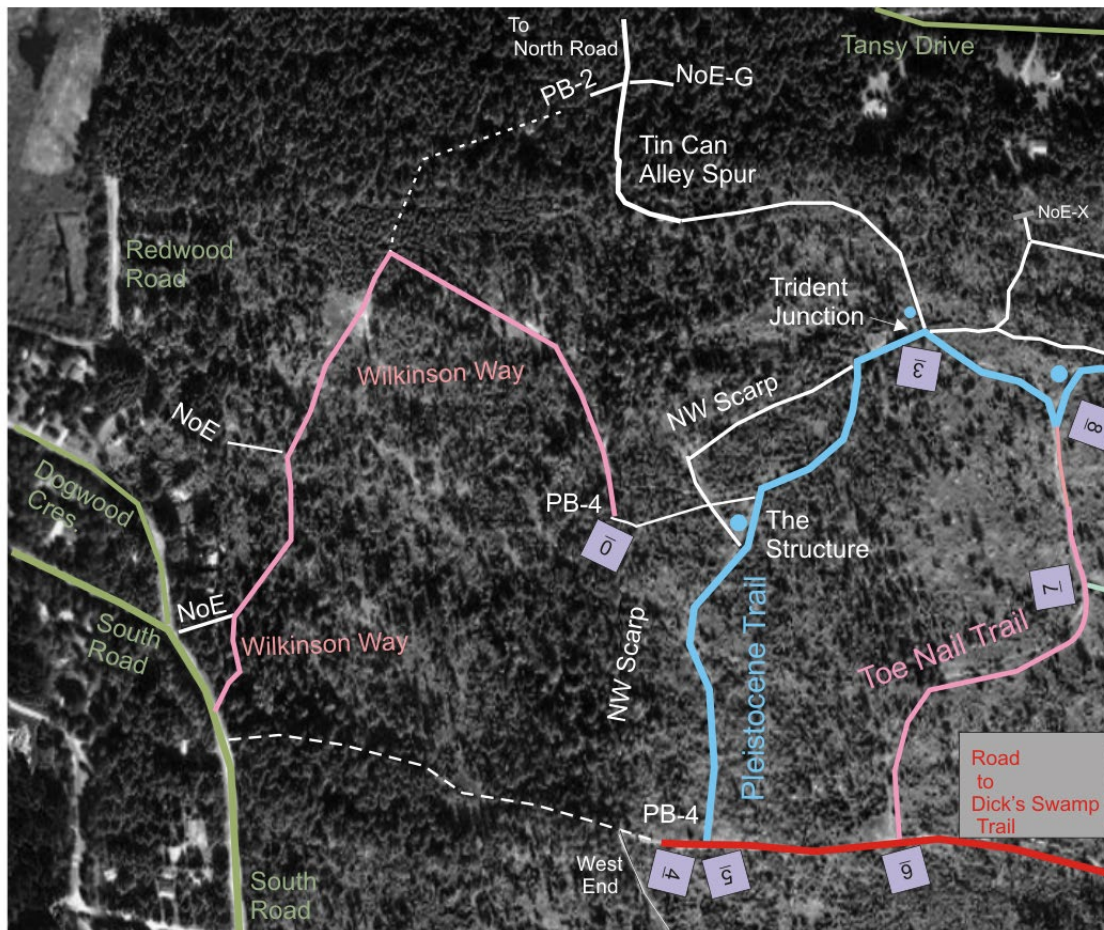
Revision: 2

**J**

Wilkinson Way is a GaLTT-licensed trail through private land. Please try not to stray from this trail.

Map J3

Revision: 1

J2**K****J**

Wilkinson Way is a GaLTT-licensed trail through private land. Please try not to stray from this trail.

Map K

Revision: 3D

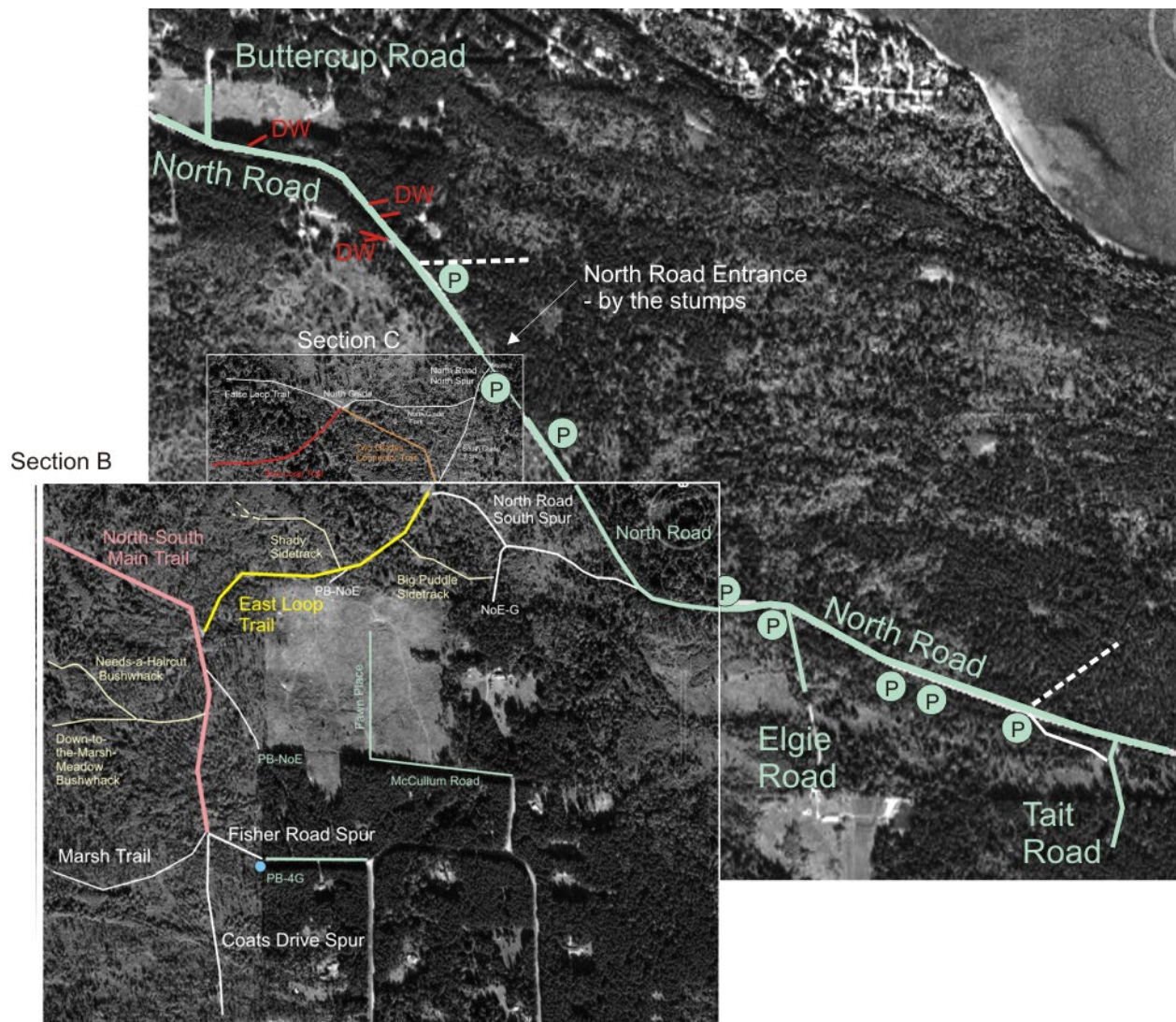


H

J

Map L

Revision: 1



Note: P in this map indicates a safe place to pull off the road. I can't say if it's legal to park there, just that lots of people do. Not all P spots access a trail.

Trail map of the 707 Southwest

Place name notes (707 SW addendum)

Alder Avenue (WT-1): Extension of the 707 CP Alder Avenue Sidetrack. A woodland trail that winds through mainly grassland, alder groves, and only small patches of knee-high salal. Fairly easy to follow, but be prepared to backtrack or improvise if the path gets ambiguous. Easiest to navigate west to east.

Golf Course Trail: Ends just east of the Golf Course Parking Lot on South Road. One of the limited number of road accesses to the park. There is a short informal footpath from the trail to the parking lot that eliminates the need to use South Road.

Passport Trail: Joining the old 707 CP East Passport and West Passport Trails.

Prairie Trail: Not the best marked trail in the world, but it passes over an interesting open savannah-like area, obviously well-liked by the deer and probably other wildlife. Easier to navigate from north to south rather than vice versa as there's less chance of getting lost among the deer trails; just keep trekking south. It's easy walking, not a bushwhack.

South Boulevard: An unusually wide and open trail, probably once used to haul-out logs. It goes nowhere, but shortly beyond its termination and before the park boundary, there's a pavement of sandstone with clearly-visible glacial striae (from N63°W).

Three Gates Trail: So-called because there is a gate near the north end where it leaves the original 707 Community Park, another further south where it enters the Coats Marsh Regional Park, and a third where it leaves the Coats Marsh Regional Park and enters what may become the Coats Marsh East park. **Gates now removed, but posts still in place.**

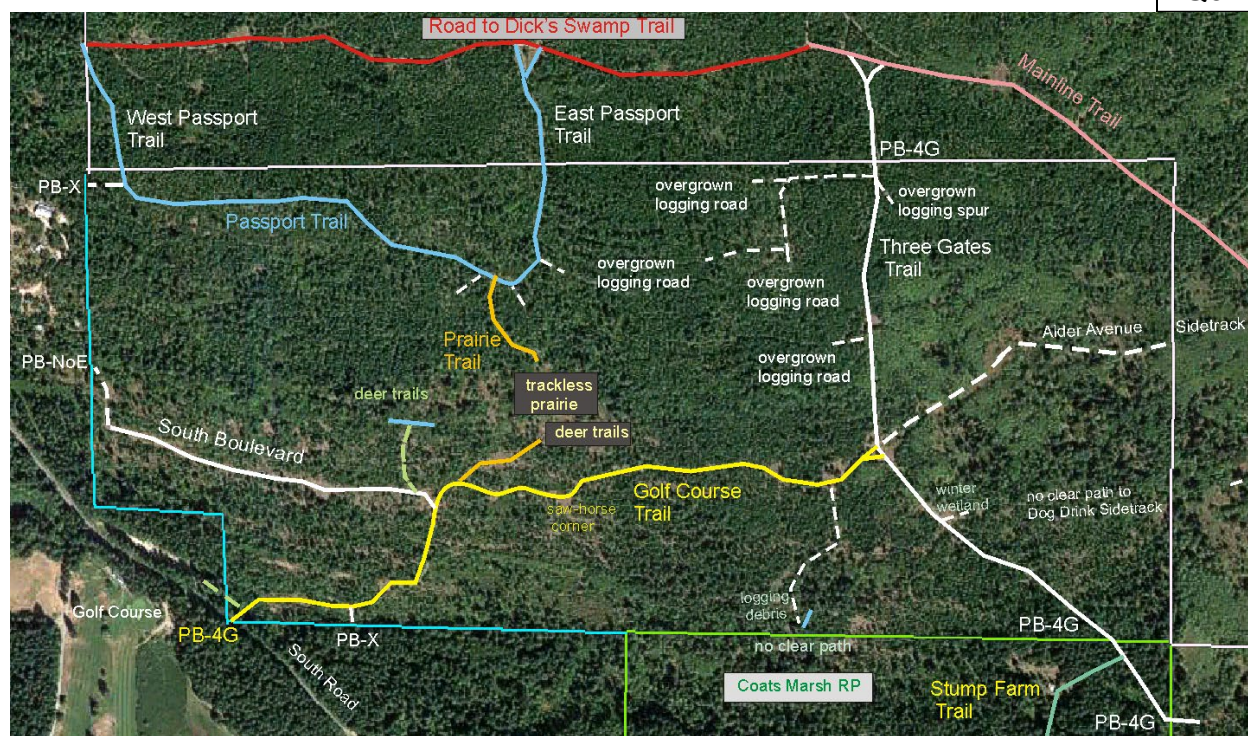
Map Q

Revision: 1H

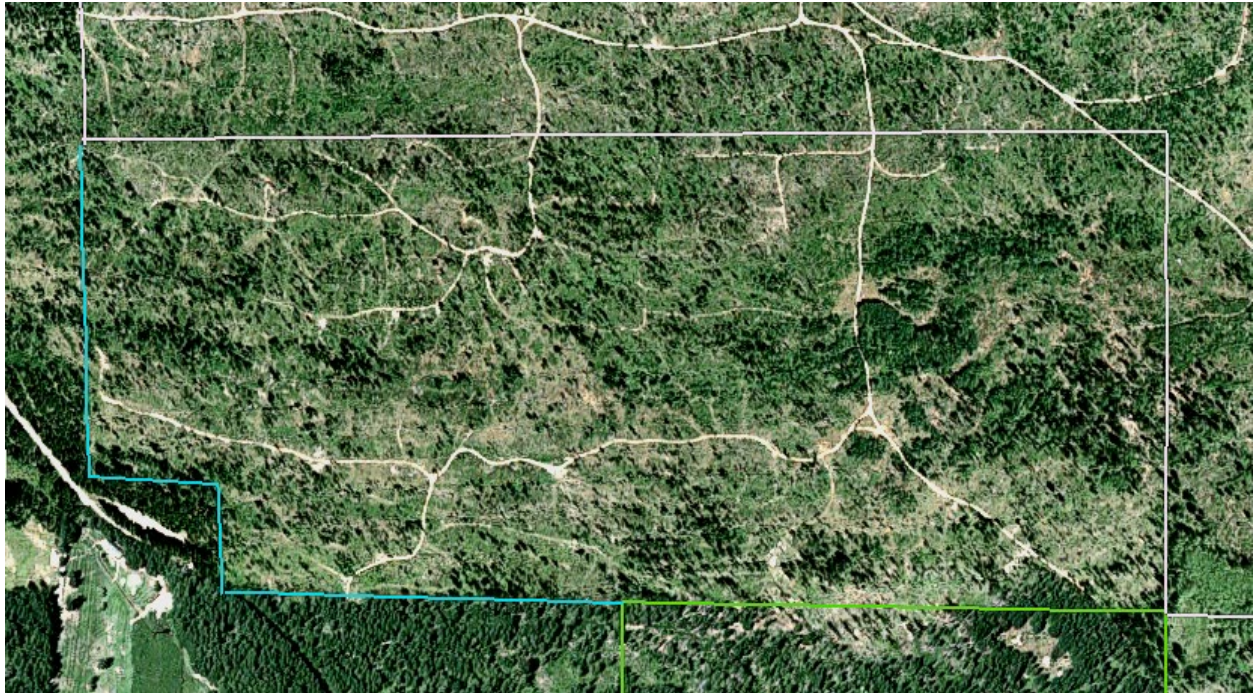
Caution: There are many former logging roads in this area that are now almost completely overgrown (Map Q2), some with surprisingly-tall fir saplings obscuring the trail.

In constructing this map, I did not use old satellite images that clearly show the locations of these roads, but instead, just mapped those that are reasonably easy to follow at the present day. Some roads and spurs in any case simply lead into the bush where they come to an abrupt end, and as such, are not useful hiking trails.

J

G
Q3

Z

Map Q2: Map Q logging roads - image from 2005.

Map Q3

Revision: 2C

G

Q



Trail maps of the Coats Marsh Regional Park area

Trails within the Regional Park are for pedestrian use only so as to minimize disturbance of the sensitive ecosystems there. Refer to the RDN 2011–2021 Management Plan for details.

Place name notes (Coats Marsh addendum, Weir Trails entry revised in February 2024)

Burn-Pile Clearings: Two, east and west, on the north shore. Clearings once used for burning stumps and other logging debris. (Map Z).

Calypso Trail: see **Weir Trails**.

Coats Drive Spur: 707CP (Map A) except for the west branch at the southern end which is **private property**.

East Path: Along the east side of the lake in Coats Marsh. It is crossed by East Path Creek (culvert) and a spillway (no culvert) from the NE Arm of Coats Marsh, now a wetland. The spur to the lakeside should not be used, severe disturbance to ducks sheltering there when the lake is frozen, migratory ducks resting, moulting ducks in summer, and ducks with young is inevitable.

Fisher Road Spur: 707CP (Map A).

Main Entrance: —to Coats Marsh. A short walk to the lake, a good spot for birdwatching if approached cautiously, but there are no trails beyond here. **Coats Marsh RP**.

Mainline Trail: 707CP (Maps B,E,E2,F).

Marsh Trail: A mix of 707CP (Maps A,B,G), **Coats Marsh RP**, and Coats Marsh East. Emergency access only to South Road (two gates). Within the RP use is pedestrian only.

NE Arm Trail: Enters the Coats Marsh NE Arm watershed area as a promising 4-wheel trail, reduces to a footpath, and then peters out in salal and many deer paths. Bushwhacking north to the Marsh Trail is possible but is far from easy going. Continuing with the sun on your right shoulder into the 707CP and across to Coats Drive Spur is similarly easy to navigate, but it too is trackless brush and is heavily used by deer. Coats Marsh East and 707CP (Map A).

Ridgeway: East side of Coats Marsh. It follows high ground between the NE and SE wetlands, and so remains unflooded and puddle-free even after heavy rain. Coats Marsh East and **private property**.

South Shore Bushwhack: A potential trail (make it up yourself as you go along) in the Coats Marsh RP management plan, but possibly, if developed, a source of disturbance of the marsh's wildlife which is a priority for the marsh. I hope it doesn't happen. Not that difficult if you like clambering over deadfalls and pushing through salal. **Coats Marsh RP**.

Stump Farm Trail: Historical name. **Coats Marsh RP**. Use is restricted to pedestrian only.

Three Gates Trail: A mix of 707CP (Map F,G), 707 SW, and a short stretch within the **Coats Marsh RP** where use is restricted to pedestrian only.

Weir Trails: Two trails, the main one being a short wooded connector down to the weir which is the headwaters of Coats Marsh Creek. Very sensitive habitat for ducks in the breeding season (mallards, hooded mergansers, and blue-winged teals), **should be off limits**. The smaller one I know as the **Calypso Trail** branches off from the larger trail and joins the Marsh Trail at the

entrance to the west burn-pile clearing. “Calypso” means concealed and this narrow, mossy trail is where fairy slippers (*Calypso bulbosa*), some call them calypso orchids, are numerous in the spring. **Coats Marsh RP.** These trails are restricted to pedestrian use only.

West Entrance Spur: A public right-of-way that allows access to the west end of Coats Marsh. **Coats Marsh RP.** This trail is within the RP and its use is restricted to pedestrian use only.

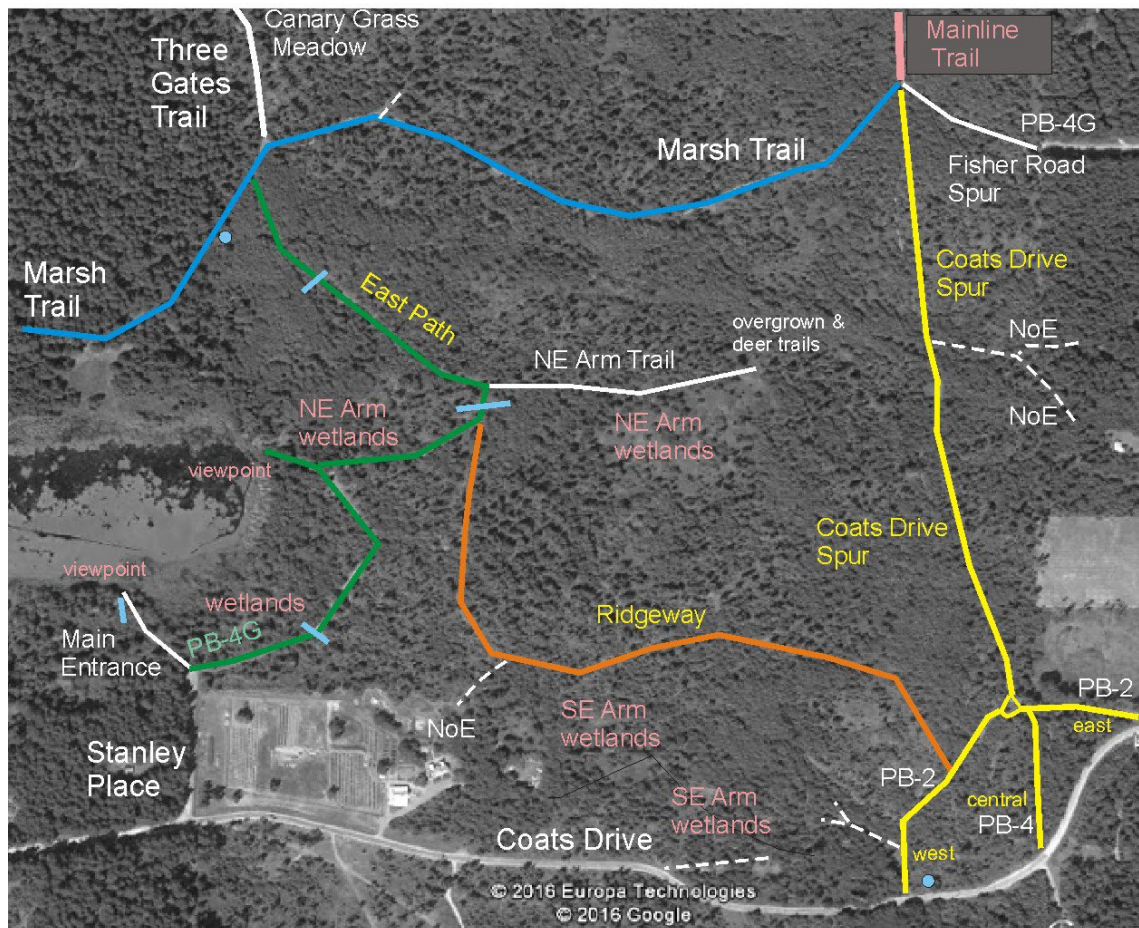
Map Y

Revision: 2

Please note that the Ridgeway will NOT become public land after change of ownership. It runs through a remainder parcel of the rezoning, and is destined to become a 3.5 ha residential lot along with an access road to Coats Drive via Stanley Place. Coats Drive Spur (west) edges into private land.

G

Z

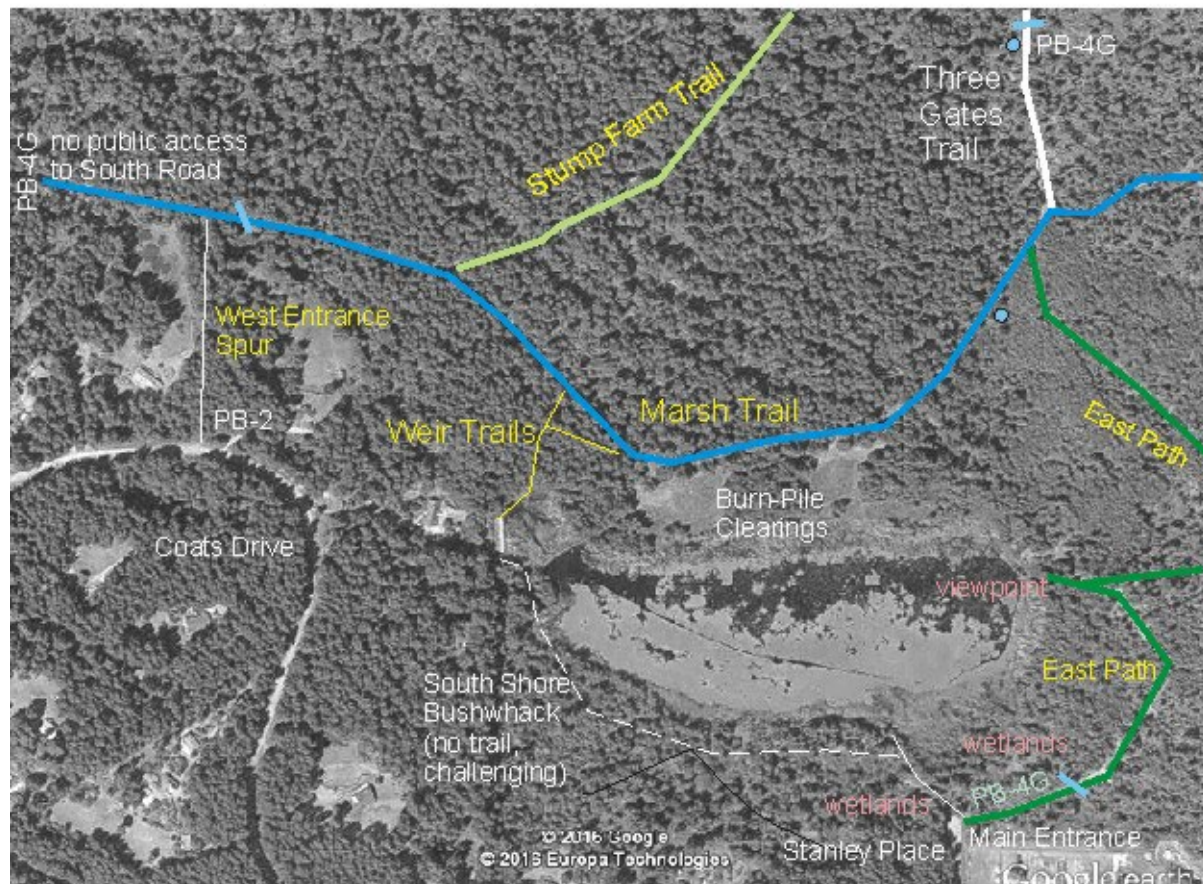


Map Z

Revision: 4

Q

G



Y

For maps of creeks and wetlands on Gabriola, see [here](#).

END